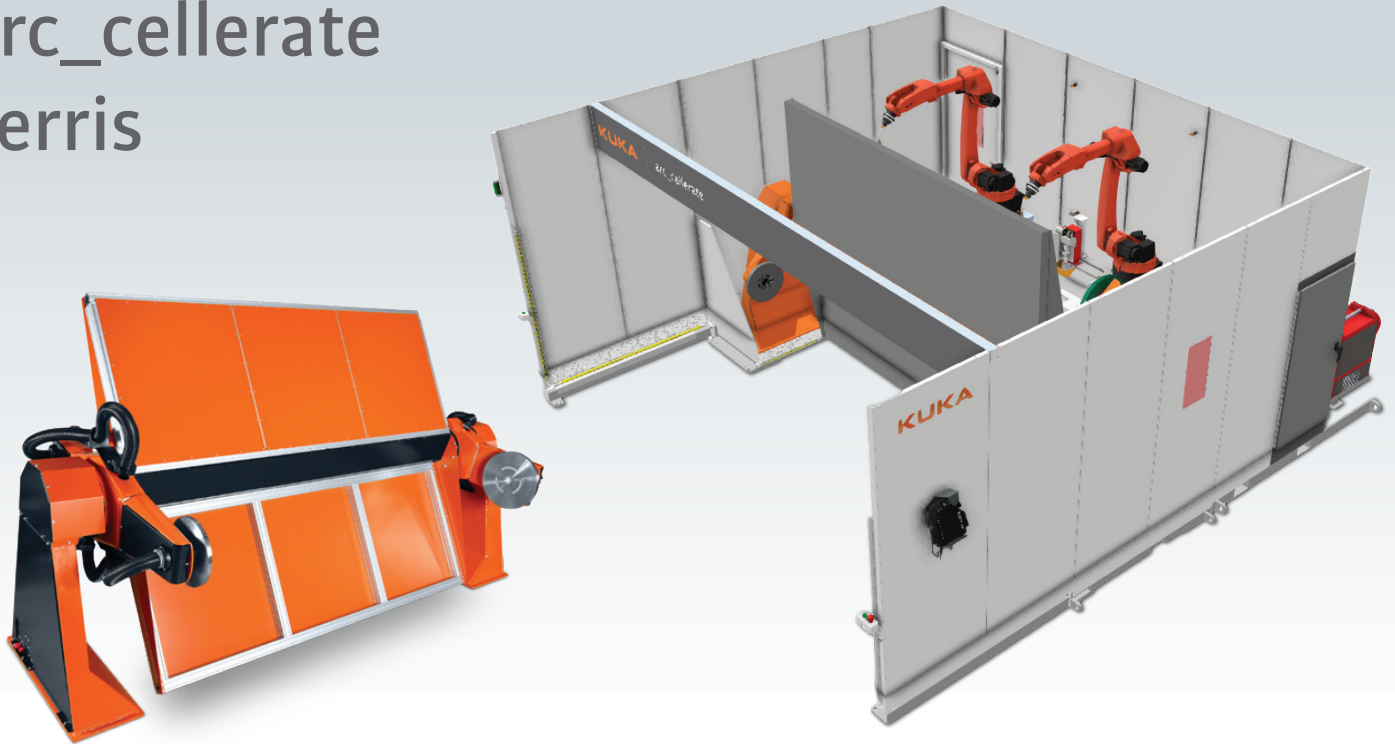




arc_cellerate Ferris



The KUKA arc_cellerate Ferris Pre-Engineered Robotic Welding System is designed to offer an economical and efficient solution for high volume applications. It is based on the powerful KP3-H2H1000-2 positioner and it comes fully equipped to handle various welding tasks.

Benefits

- Using the long reach hollow-wrist KUKA robot provides a robust and repeatable system that enhances productivity, ensures consistent quality, and provides the necessary flexibility for various welding applications
- Simple installation, fast commissioning for processing a wide variety of welding applications
- Modular design for plug and play
- Small footprint to conserve floorspace (Example: 214"L x 227"W x 107" for the standard Ferris cell with 2 robots)
- Simple start up through on-demand training videos and manuals accessible via QR code
- Delivered in three parts for fast assembly. The customer connects the utilities, feeds the wire and can begin programming their parts
- Maximum production thanks to fast indexing speed (3.4 s main axes, 2.4 s minor axes)
- The positioner's generous 2200lb capacity per side permits the welding of large parts

Each complete system includes the following components:

- KR 6 R2010-2 arc HW E 6-axis robot with a 2m reach and KR C5 controller
- Fronius TPS 400i Power Source complete with wire feeder and MIG torch
- Torch cleaning and cutting station
- Easy to use graphical touchscreen interface for set up and maintenance
- Simple 3-button operator control station
- Powerful arc welding software to speed up programming
- Large working envelope
- Welded steel base with fork pockets and checker plate floor
- One maintenance door window and one window on the right side, providing maximum visibility of the welding process
- Safety: E-stops, interlocks on the sliding doors, locking safety switch for maintenance door, and tri-color operational lights. Single point electrical power (3-phase 480V or 575V)
- Flash guard and standard hole pattern for mounting tooling



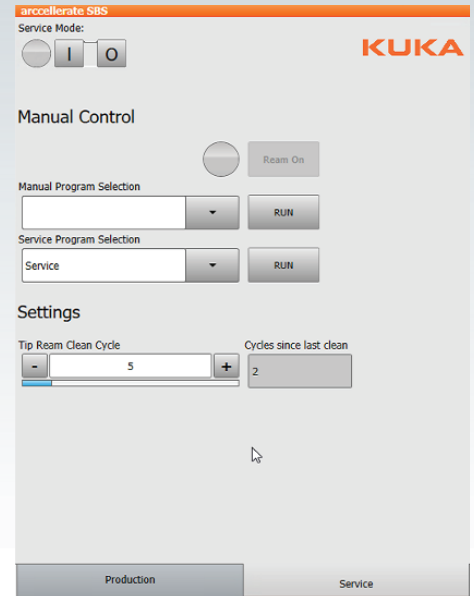
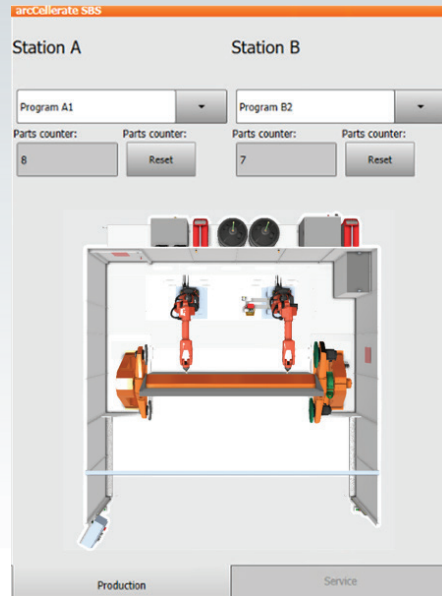
arc_cellerate Ferris

arc_cellerate Ferris HMI Display

- Rapid set up and maintenance with graphical touchscreen interface
- Pre-designed tabs for process visibility
- HMI Service Features
 - Fully password protected
 - Manual torch clean operation
 - Run production programs manually
 - Run various service routines
 - Set torch cleaner interval

Options

- Upgradeable to pro Version (available on all arc_cellerate models)
- Three standard cell sizes (based on positioner length, plate-to-plate)
 - 2.4 m
 - 3.2 m
 - 4.0 m
- Flexible robot configuration
 - 1, 2, or 3 robots per cell
- Convenience Package
 - Operator light & fan
 - 120V receptacle at operator station
 - Dedicated air line at operator station
 - Automatic equipment shutdown when the cell is idle (adjustable time setting)



All arc_cellerate cells can be upgraded to the pro Version. The arc_cellerate Ferris pro, shown here, features an operator push-button control station with Allen-Bradley PLC and 10-inch touchscreen HMI.



For pricing: sales@KUKA.com