



## KR 50 R2500 F



### Technical data

|  |  |
|--|--|
| Maximum reach  | 2501 mm                                      |
| Rated payload  | 50 kg  |
| Maximum payload  | 61 kg  |
| Maximum supplementary load, rotating column / link arm / arm | -  |
| Pose repeatability (ISO 9283)                                | ± 0.05 mm                                    |
| Number of axes   | 6  |
| Mounting position  | Floor;<br>Ceiling;<br>Wall;<br>Desired angle |
| Footprint  | 603 mm x 480 mm                              |
| Weight   | approx. 559 kg                               |

### Axis data

|                          |                |
|--------------------------|----------------|
| Motion range             |                |
| A1                       | ±185 °         |
| A2                       | -175 ° / 60 °  |
| A3                       | -120 ° / 170 ° |
| A4                       | ±180 °         |
| A5                       | ±125 °         |
| A6                       | ±350 °         |
| Speed with rated payload |                |
| A1                       | 175 °/s        |
| A2                       | 158 °/s        |
| A3                       | 175 °/s        |
| A4                       | 250 °/s        |
| A5                       | 250 °/s        |
| A6                       | 360 °/s        |

### Operating conditions

|                                      |                                |
|--------------------------------------|--------------------------------|
| Ambient temperature during operation | 0 °C to 55 °C (273 K to 328 K) |
|--------------------------------------|--------------------------------|

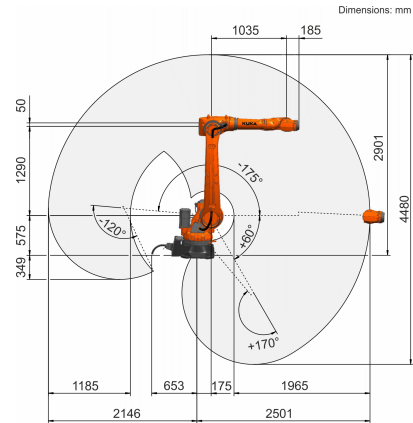
### Protection rating

|  |             |
|--|-------------|
| Protection rating (IEC 60529)              | IP65 / IP67 |
| Schutzart Arm (IEC 60529)                  | IP65 / IP67 |
| Protection rating, robot wrist (IEC 60529) | IP65 / IP67 |

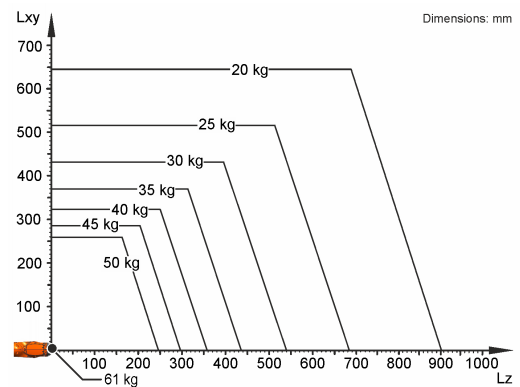
### Controller

|            |                 |
|------------|-----------------|
| Controller | KR C5;<br>KR C4 |
|------------|-----------------|

### Workspace graphic



### Payload diagram



The KR 50 R2500 F is designed for a rated payload of 50 kg in order to optimize the dynamic performance of the robot. The maximum payload of 61 kg applies only if the position of the center of mass is 0 mm and a supplementary load optimized for the load case is mounted. The specific load case must be verified using KUKA.Load or KUKA Compose. For further consultation, please contact KUKA Support.

### Mounting flange

