

KUKA



Whether standardized or customized - the optimum solution for every positioning task.



Whether standardized or customized – the optimum solution for every positioning task.



High productivity. Higher throughput, fewer rejects or the quick change of tool carriers: dynamic drives, perfect coordination between robot and positioner, and machine data that can be individually optimized for cycle time optimization all enable successful production.

Efficiency and profitability. Robot positioner systems make use of proven KUKA robot components with a high proportion of identical parts. Preconfigured elements ensure reduced integration time, while KUKA.Sim ensures complete and easy simulation capability.

Uncompromising quality. Robots and positioners from KUKA operate with high precision. The result of flexible, repeatable performance is consistently flawless workpieces.


Integration – simple, safe, fast. Electrically insulated face plates, easy mastering with the KUKA EMD and simple programming: Proven, familiar solutions and standardized interfaces stand for efficient integration and fast implementation of individual customer solutions.

Customized solutions from a single source. From robots and positioners to linear units and other components: the modular system ensures simple implementation of customer-specific solutions and thus precise coordination between positioners and workstations.

 **KP1-MD**

	KP1-MD500-2	KP1-MD750-2	KP1-MD1000-2	KP1-MD1500-2	KP1-MD2000
Rated payload	500 kg	750 kg	1,000 kg	1,500 kg	2,000 kg
Installation position	Floor, ceiling, wall, angle	Floor, ceiling, wall, angle	Floor, ceiling, wall, angle	Floor, ceiling, wall, angle	Floor, ceiling, wall, angle
Loading height	417 mm	417 mm	417 mm	417 mm	505 mm
Hollow shaft Ø	-	-	-	-	-



 **KP1-MD HW**

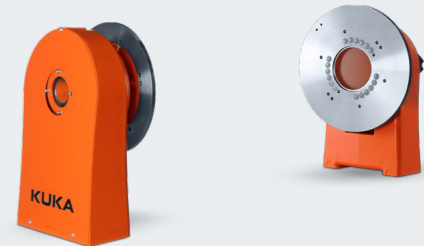
	KP1-MD250 HW	KP1-MD500 HW	KP1-MD750 HW
Rated payload	250 kg	500 kg	750 kg
Installation position	Floor, ceiling, wall, angle	Floor, ceiling, wall, angle	Floor, ceiling, wall, angle
Loading height	417 mm	417 mm	417 mm
Hollow shaft Ø	60 mm	60 mm	60 mm



 **KP1-MDC**

	KP1-MDC500-2	KP1-MDC750-2	KP1-MDC1000-2
Rated payload	500 kg	750 kg	1,000 kg
Installation position	Floor, ceiling, wall, angle	Floor, ceiling, wall, angle	Floor, ceiling, wall, angle
Loading height	417 mm	417 mm	417 mm
Hollow shaft Ø	-	-	-
Counterbearing hollow shaft Ø	68 mm	68 mm	68 mm

	KP1-MDC1500-2	KP1-MDC2000	KP1-MDC4000
Rated payload	1,500 kg	2,000 kg	4,000 kg
Installation position	Floor, ceiling, wall, angle	Floor, ceiling, wall, angle	Floor, ceiling, wall, angle
Loading height	417 mm	505 mm	505 mm
Hollow shaft Ø	-	-	-
Counterbearing hollow shaft Ø	68 mm	69 mm	69 mm



 **KP1-MDC HW**

	KP1-MDC250 HW	KP1-MDC500 HW	KP1-MDC750 HW	KP1-MDC1000 HW
Rated payload	250 kg	500 kg	750 kg	1,000 kg
Installation position	Floor, ceiling, wall, angle	Floor, ceiling, wall, angle	Floor, ceiling, wall, angle	Floor, ceiling, wall, angle
Loading height	417 mm	417 mm	417 mm	417 mm
Hollow shaft Ø	60 mm	60 mm	60 mm	60 mm
Counterbearing hollow shaft Ø	68 mm	68 mm	68 mm	68 mm





-  kuka.com/contacts
-  facebook.com/kukaglobal
-  youtube.com/kukarobotgroup
-  twitter.com/kukaglobal
-  linkedin.com/company/kukaglobal
-  instagram.com/kukaglobal

01.05.2024

Details provided about the properties and usability of the products are purely for information purposes and do not constitute a guarantee of these characteristics. The extent of goods delivered is determined by the subject matter of the specific contract. No liability accepted for errors or omissions. Subject to alterations. © 2024 KUKA