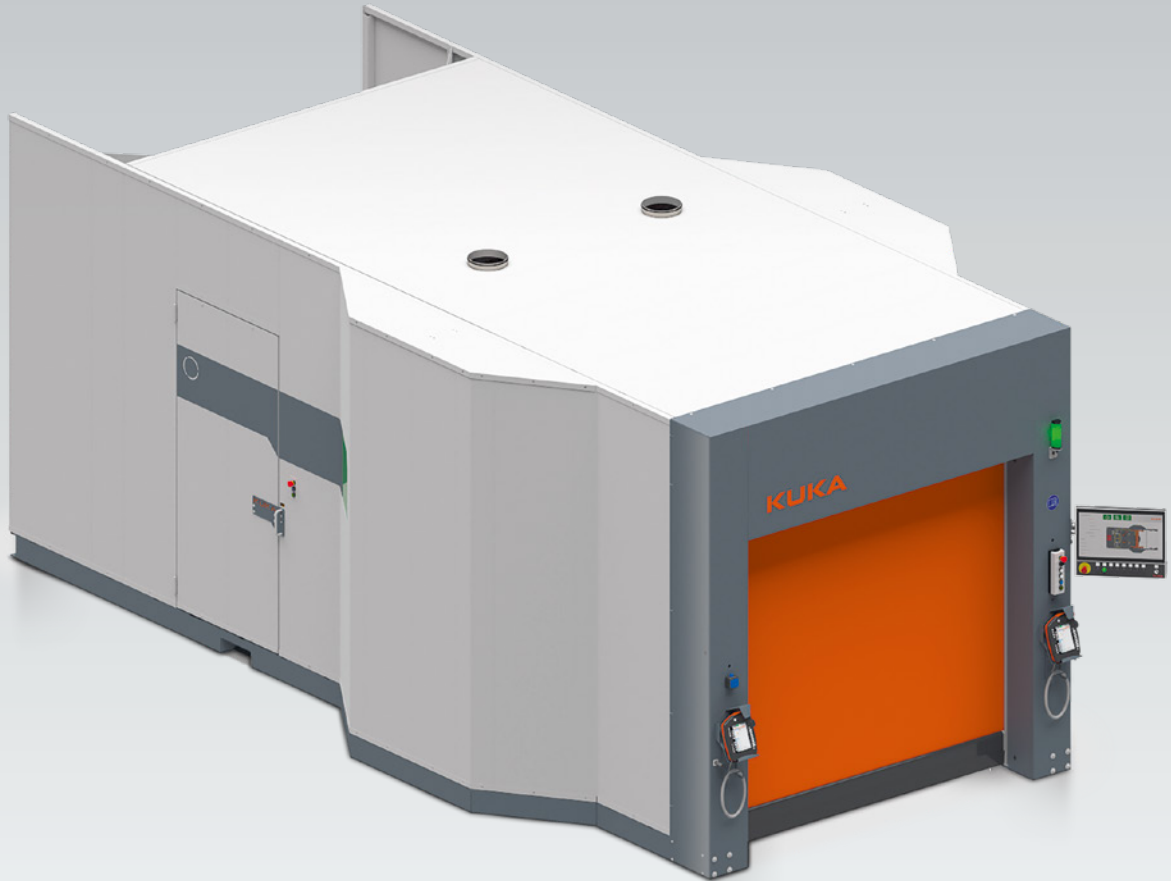




cell4_production manufacturing cells
_arc welding efficiently automated



KUKA cell4_arc midsize

_the preconfigured MIG/MAG cell,
ready for operation

KUKA MIG/MAG cells are fast available and can be custom-configured with a range of versatile, modular standard packages and options. Whether for steel or aluminum, KUKA cell4_arc midsize can be configured to suit your production volume and your specific welding processes. Our compact solution offers the optimal manufacturing efficiency in confined spaces.

Highlights cell4_arc midsize

- Compact, portable cell on a base frame
- Wide scope of applications with many preconfigured variants
- Optimized for maximum output
- Assured quality with optional monitoring of process parameters
- Access to KUKA Xpert – the digital knowledge database for all KUKA products

KUKA | Xpert

- Ready for IIoT and remote services



KUKA cloud applications

KUKA cell4_arc midsize

_compact arc welding cell, fast configured and immediately productive

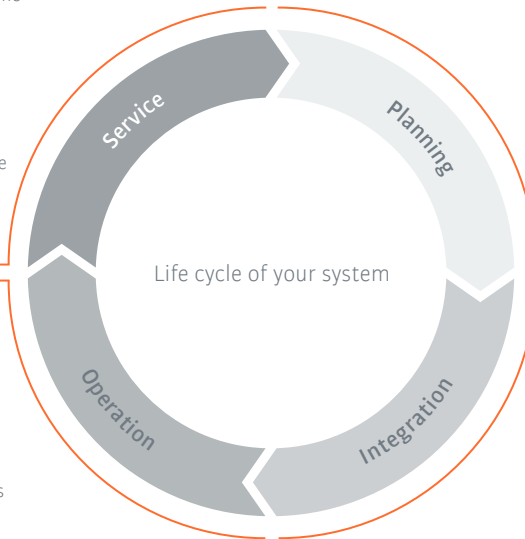
With cell4_arc midsize, KUKA delivers everything from a single source: perfectly coordinated components, defined interfaces and proven processes. Preconfigured and immediately ready for direct commissioning in your production environment. The fully-automated cell can be equipped with various positioning units, as well as hardware and software options, providing an optimum solution for your production facility. **Optimally integrated with comprehensive support from our experts throughout – from planning through to servicing.**

Service

- Increased productivity and minimized downtime
 - 24/7 hotline
 - Global spare parts and service support
 - Remote Service
 - Service agreements and maintenance
 - Role-specific training courses
- Services for maintaining optimal performance throughout the entire life cycle of the machine

Planning

- KUKA supports you in the planning phase
- Fast feasibility studies with KUKA.Sim
- Flexible financing models
- Short delivery times
- Modular structure enables adaptation to your production requirements



Operation

- High system availability thanks to the use of service-proven components
- Future-oriented KUKA.Web HMI for clear visualization and operator control
- Web access to operating data with freely configurable dashboards
- Quality assurance by means of flexible process data monitoring and component-specific documentation

Integration and commissioning

- Short installation times at the customer's site
- Simple integration of fixtures and other system components
- Easy programming with KUKA technology packages and ready2_pilot
- Offline programming with KUKA.Sim



Standard configuration	cell4_arc midsize KP1A single KR	cell4_arc midsize KP3-V2H dual KR	cell4_arc midsize KP3-V2H single KR	cell4_arc midsize KP5 single KR
Length	8,120 mm	8,120 mm	8,120 mm	8,120 mm
Width	3,010 mm	3,840 mm	3,840 mm	3,840 mm
Height	3,020 mm	3,020 mm	3,020 mm	3,020 mm
Robot	KR CYBERTECH (KR 8 R2010)	2 x KR CYBERTECH nano (KR 6 R1820)	KR CYBERTECH (KR 8 R2010)	KR CYBERTECH (KR 8 R2010)
Positioner	KP1-V2T1000	KP3-V2H1000 R600 L2000	KP3-V2H1000 R600 L2000	KP5-V2S2V500 R600
TCP check	KUKA.TRACC TCP	2 x KUKA.TRACC TCP	KUKA.TRACC TCP	KUKA.TRACC TCP
Loading area	Light curtain and laser scanner	Light curtain and laser scanner	Light curtain and laser scanner	Light curtain and laser scanner

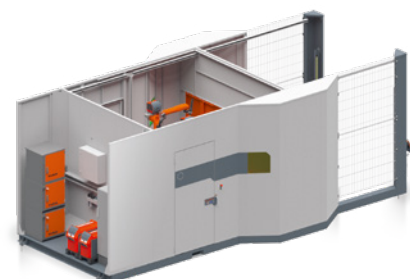
Various option packages can be selected:

- For easy, hand-guided programming, the cell can be optionally equipped with **ready2_pilot®**.
- Depending on the requirements of the welding applications, appropriate welding packages from different manufacturers can be selected.



...and other

- Cell housing with roof
- Loading area with roll-up door
- Central power supply
- Operation and Visualization with KUKA HMI Advanced
- KUKA.ProcessScreen (Monitoring and documentation of process parameters)
- KUKA.RoboTeam (for cell4_arc midsize KP3-V2H dual KR)



www.kuka.com/contacts

Details provided about the properties and usability of the products are purely for information purposes and do not constitute a guarantee of these characteristics. The extent of goods delivered is determined by the subject matter of the specific contract. No liability accepted for errors or omissions. Subject to technical alterations. © 2021 KUKA